



# TRANSITIONAL PASTOR

## AT SOUTH MECKLENBURG PRESBYTERIAN CHURCH

South Mecklenburg Presbyterian Church is seeking an experienced full-time Transitional Pastor who will partner with us as we continue to build our momentum in ministry while navigating a thoughtful and faithful pastoral transition after our beloved pastor of 21 years announced his retirement.

SMPC is a thriving faith community of just under 900 members with a committed and experienced staff, a depth of lay leaders who love the church and an engaged and generous congregation.

With this call, we pray that the Transitional Pastor will:

- Provide stability, energy and love during the transition;
- Proclaim the Word with clarity and warmth through meaningful, thoughtful sermons;
- Maintain communication, trust and connection;
- Promote unity, hope and inspiration during this transitional time;
- Reflect the grace, mercy and peace of Jesus Christ in thought, word and deed.



# DUTIES AND RESPONSIBILITIES

The Transitional Pastor will serve as head of staff and moderator of the Session, and, with the Session, will be responsible for the overall direction of the church, staff and volunteers. Duties include planning and leading worship services, preaching, administering Sacraments, staff support and administration, weddings, funerals, counseling, teaching and visitation.

The Transitional Pastor will be supported by our Associate Pastor for Youth & Missions/Outreach and our Parish Associate.

The Transitional Pastor will assist us through the transition period, helping members reflect on who we are, where God has led us, and where the Spirit may be calling us next. This includes facilitating honest conversations, identifying areas of strength and growth, and preparing the congregation to welcome new pastoral leadership.

Administratively, SMPC operates with a flexible work schedule. Generally, the Transitional Pastor will maintain office hours Tuesday–Thursday, including leading a Tuesday morning staff meeting. The Transitional Pastor will attend evening committee meetings (usually online) two to three times a month, moderate monthly Session meetings and lead new elder training. The Transitional Pastor may choose whether to continue leading a Wednesday morning Pastor's Bible Study for 20–30 regular participants and may choose to continue publishing a weekly devotional emailed to our congregation.

## Qualifications

- Ordained Minister of Word and Sacrament in the PC(USA)
- 10+ years experience as Senior Pastor/Head of Staff, preferably at a church similar in size to SMPC
- Passion for preaching
- Experience with at least one call as Transitional Pastor
- Collaborative approach to ministry and excellent communication skills

## Compensation & Benefits

Salary \$115k+, commensurate with experience. Benefits include:

- Board of Pensions Congregational Pastors Package, 100% coverage for employee and children, 70% coverage for spouse
- Four weeks vacation and 2 weeks study leave per year
- 10 paid holidays
- Relocation assistance possible

Interested candidates may submit a cover letter and resume and/or Personal Discernment Profile (PDP) to Nancy Metzler, Chair, SMPC Transition Committee, [smpchr@smpchome.org](mailto:smpchr@smpchome.org). Review of submissions will begin September 15, 2025.

# WELCOME TO CHARLOTTE, NC

Nestled in the heart of the Southeast, Charlotte is a vibrant, fast-growing city known for its Southern hospitality, thriving economy, and rich cultural scene. Home to beautiful parks, a lively culinary and arts community, professional sports teams, and top-ranked schools, Charlotte offers the perfect blend of big-city opportunity and small-town charm. With a mild, four-season climate, residents enjoy long springs and falls, warm summers, and just enough winter to feel cozy. Charlotte's location also makes it easy to explore the beauty of the Carolinas—whether you're heading west to hike the Blue Ridge Mountains or east for a weekend at the beach, both are just a few hours' drive away.



**South Mecklenburg Presbyterian Church**  
8601 Bryant Farms Rd. | Charlotte, NC 28277  
Facebook: @southmecklenburgpresbyterian & Instagram: @southmeckpres  
[smpchome.org](http://smpchome.org)





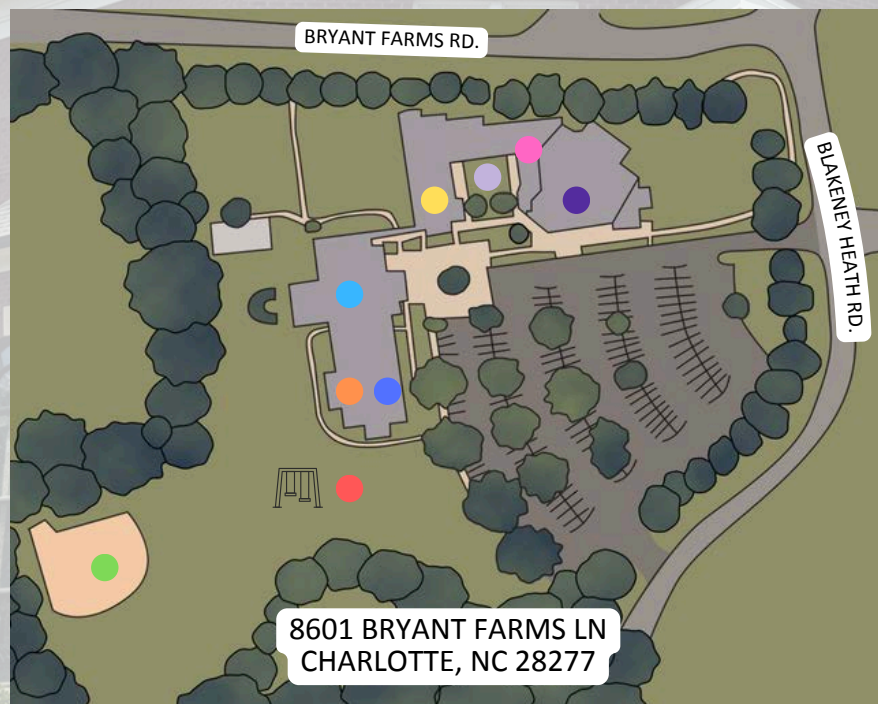
# SMPC'S HISTORY AND VISION

South Mecklenburg Presbyterian Church is an inclusive, vibrant faith community located in the Ballantyne neighborhood of Charlotte, NC. Organized in 1991, we have grown from a new church development to an established congregation of approximately 900 members, with more than 300 children and youth actively involved.

We seek to worship, connect and serve with intention as disciples of Jesus Christ and strive to be a community where all are welcomed and feel at home. Our mission is to embrace our identity as beloved children of God and to reflect that love by loving others.

## OUR CAMPUS

Our church is located in the Ballantyne neighborhood, a dynamic and family-friendly area in South Charlotte known for its excellent schools, abundant green space, and strong sense of community. Ballantyne offers the convenience of suburban living with easy access to uptown Charlotte's business, cultural and entertainment centers.



### CAMPUS MAP

- SANCTUARY
- CHAPEL/CHURCH OFFICE
- MCQUEEN ROOM
- MECKLENBURG HALL
- LOWE BALL FIELD
- SMPC PRESCHOOL
- THE COMMONS
- PLAYGROUND
- COLUMBARIUM



# SMPC AT A GLANCE

## Active Members

57	Ages 17 & under
124	Ages 18-25
80	Ages 26-40
256	Ages 41-55
179	Ages 56-70
199	Ages 70+
318	Youth and Children



**81** Students at SMPC  
Preschool

**76%** Average church email  
open rate



**1,331** People attended  
Christmas Eve services

**\$33,789** Collected through the NC Disaster  
Relief Fund for Western NC

**336**  
Pounds of bacon  
sizzled for  
Center of Hope



**58**  
Niches reserved in  
SMPC columbarium



Championship for SMPC  
Men's Softball

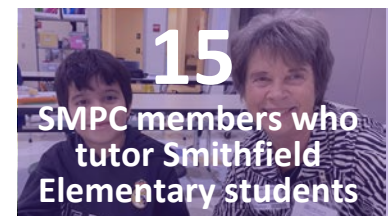
**332**

Average Sunday worship  
attendance in person



**8,584**

Total views in 2024 for  
online worship



SMPC members who  
tutor Smithfield  
Elementary students

**77**

OFCB Haitian school  
children sponsored  
by SMPC families

**1,200**

Bagged lunches  
donated to Roof  
Above

# 2024 SMPC Annual Financial Report

## Operating Fund Giving

386

Households gave

\$3,202

Average annual giving per household

\$1.24M

Total 2024 gifts - \$13k over budget

66%

Giving was through  
online giving



## Building Fund Giving

\$710k

Mortgage

138

households

gave \$422,200 to the From Strength to  
Strength building fund campaign

94

Families have paid their building fund  
pledge in full - thank you!

\$300k

Building fund pledges outstanding, due by  
June 2025.



## Outreach & Mission Giving

\$33.8k

Donations from 123  
families for NC  
Disaster Relief

\$3.3k

One Great Hour of  
Sharing offering

\$22.6k

Alternative Gift  
Market

\$56.3k

Support of OFCB

\$5.6k

Christmas Eve offering

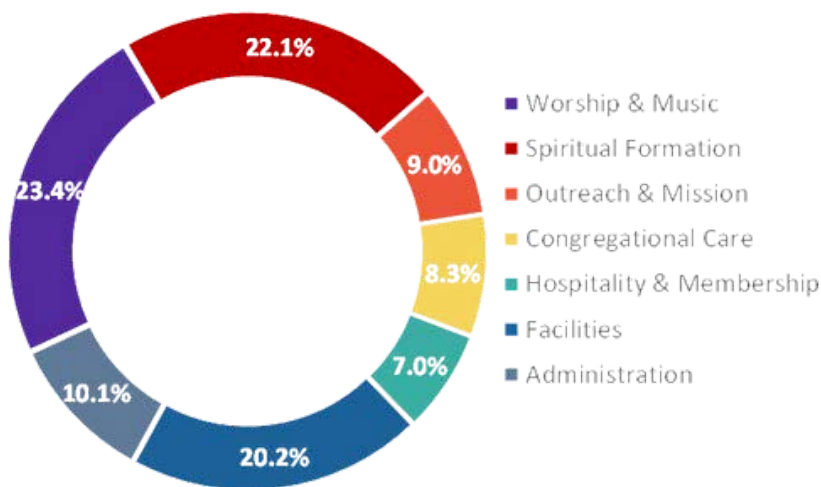
\$37.8k

Support of local  
outreach agencies



## 2025 Budget and 2024 Operating Income Statement

## 2024 Operating Expenses by Ministry Area



## SMPC Staff

**Rev. Lindsey Odom**

Associate Pastor of Youth and Missions/Outreach

**Rev. Melissa White**

Parish Associate

**Laura Black**

Ministry Associate for Children and Music

**Zach Bowyer**

Director of Music and Organist

**Rebecca Guzman**

Director of Spiritual Formation

**Adrienne Jaquith**

Office and Database Manager

**Cheryl Perry**

Director of Communications

**Steve Stevenson**

Facilities Administrator

**Dr. Tammy Winchip**

SMPC Preschool Director

**Mary Katheryne Zagora**

Financial Administrator