



**South
Mecklenburg**
PRESBYTERIAN CHURCH

**A Service of Worship
Sixth Sunday of Easter
May 10, 2026
10:10 a.m., Sanctuary & Livestream**

**Please rise in body or in spirit.*

We Gather

Prelude *Adagio in Ab, from Sonata No. 1* Felix Mendelssohn

Welcome and Concerns of the Church Dr. Sandy Hull

The Lord be with you. **And also with you!**

"Paws" for the CAT Gayle Ireland, Walton Price

Introit *Rain Down* Jaime Cortez

***Call to Worship** (Romans 11:33-36) Ella Howey

One: How great are God's riches and power and wisdom!

All: How impossible it is for us to fully understand God's ways!

One: Who knows the Lord's thoughts?

All: Who is wise enough to give the Lord advice?

One: Who has given God so much

All: that God needs to pay it back?

One: Everything comes from God!

All: Everything exists by God's power!

One: Everything is intended for God's glory!

All: All glory to God forever! Amen.

***Hymn 634** *To God Be the Glory* TO GOD BE THE GLORY

1 To God be the glo - ry; great things he has done!
2 Great things he has taught us; great things he has done,

So loved he the world that he gave us his Son,
and great our re - joic - ing through Je - sus the Son;

who yield - ed his life an a - tone - ment for sin,
but pur - er and high - er and great - er will be

and o - pened the life - gate that all may go in.
our won - der, our trans - port, when Je - sus we see.

Praise the Lord, praise the Lord; let the earth hear his voice!

Praise the Lord, praise the Lord; let the people rejoice!

O come to the Father through Jesus the Son,

and give him the glory: great things he has done!

Prayer of Confession (*unison*)

Rev. Lindsey Odom

Good Shepherd, you call us by name and lead us beside still waters, yet we confess that we do not always follow your voice. We are hesitant to trust you, quick to stray, and stubborn in our independence. We listen to the noise of the world instead of the truth of your Word. Forgive us, O' God. Gather us back into your fold. Open our ears to hear your voice clearly and soften our hearts to follow where you lead. Remind us that you alone are the gate, and that in you, we find safety, provision, and abundant life. Through Jesus Christ, our Good Shepherd, we pray. Amen.

Assurance of God's Grace

Rev. Odom

One: Jesus says, "I am the gate. Whoever enters by me will be saved and will come in and go out and find pasture...I have come that they may have life and have it abundantly." Beloved, in Jesus Christ, we are not left wandering. We are called, gathered, and held in God's care.

All: Thanks be to God. Amen.

*Glory to God, whose goodness shines on me,
and to the Son, whose grace has pardoned me,
and to the Spirit, whose love has set me free.
As it was in the beginning, is now and ever shall be. Amen.*

We Hear and Respond to the Word

Church Family Moment

Rebecca Guzman

1. **Story Connection:** Listen to [The Kissing Hand by Audrey Penn](#), a sweet story about a raccoon who learns he's never alone—even when he can't see his mom. She gives him a kiss in his hand to remind him he's always loved. As Briana Stewart writes, "The security Jesus offers—'no one will snatch them out of my hand'—is echoed in the mother's gesture." Both the story and the Gospel remind us that God's love is always with us, guiding us on our journey. (Source: [Storypath](#))
2. **Craft:** Print out [this sheep craft](#), cut, color, and glue. As you create, talk about what it means to be part of Jesus' flock and how he knows each one of us by name.
3. **Game:** Play a game like "Duck, Duck, Goose," but call it "Sheep, Sheep, Wolf." Sit in a circle. One person walks around tapping heads and saying "sheep." When they say "wolf," the person tapped jumps up and chases them around the circle. Try to make it back to the empty spot before being tagged. After playing, talk about how sheep need a shepherd to guide and protect them and how Jesus is our Good Shepherd.
4. **Wonder Together:**
 - a. I wonder how we learn to recognize Jesus' voice.
 - b. I wonder what it means to belong to Jesus.
 - c. I wonder when you have felt cared for or protected.
 - d. I wonder how we can follow Jesus in our everyday lives.



Children's Liturgy

Rebecca Guzman

*As the children four years old through third grade gather for
Children's Worship, the congregation is invited to sing (hymn no. 19):*

***God of great and God of small, God of one and God of all,
God of weak and God of strong, God to whom all things belong,
Alleluia, alleluia, praise be to your name.***

Congregation: God be with you there.

Children: God be with you here.

The children will return to join their families following the sermon.

Prayer for Illumination

Rev. Odom

First Reading

Psalm 23

Rev. Odom

The Lord is my shepherd, I shall not want.
He makes me lie down in green pastures;
he leads me beside still waters;
he restores my soul.
He leads me in paths of righteousness
for his name's sake.
Even though I walk through the valley of the shadow of death,
I fear no evil;
For you are with me;
your rod and your staff—
they comfort me.
You prepare a table before me
in the presence of my enemies;
you anoint my head with oil;
my cup overflows.
Surely goodness and mercy shall follow me
all the days of my life,
and I shall dwell in the house of the Lord
forever.

Anthem

Gentle Shepherd

Molly Ijames

Chancel Choir; Sarah Abushakra, piano

Gentle Shepherd, lead us onward: we have need of nothing more;
By still waters, through green pastures, You our weary souls restore.
Gentle Shepherd, for Your glory, guide us safely to our home,
With Your staff to draw us closer when our hearts begin to roam.
Gentle Shepherd, when we wander through the valley of despair
And the darkness overwhelms us, You are ever watching there.
Gentle Shepherd, Voice of Comfort, calling through the night and cold,
With Your rod of sweet correction, turn Your sheep back to the fold.
Gentle Shepherd, oh what mercy! You became the sacrifice,
Laid Your life down in submission when no lamb could pay the price.
Gentle Shepherd, interceding, leading us through righteous ways,
Till we reach the upper pasture, where we'll live for endless days.

Second Reading

John 10:1-18

Dr. Hull

"Very truly, I tell you, anyone who does not enter the sheepfold by the gate but climbs in by another way is a thief and a bandit. The one who enters by the gate is the shepherd of the sheep. The gatekeeper opens the gate for him, and the sheep hear his voice. He calls his own sheep by name and leads them out. When he has brought out all his own, he goes ahead of them, and the sheep follow him because they know his voice. They will not follow a stranger, but they will run from him because they do not know the voice of strangers." Jesus used this figure of speech with them, but they did not understand what he was saying to them. So again Jesus said to them, "Very truly, I tell you, I am the gate for the sheep. All who came before me are thieves and bandits; but the sheep did not listen

to them. I am the gate. Whoever enters by me will be saved, and will come in and go out and find pasture. The thief comes only to steal and kill and destroy. I came that they may have life, and have it abundantly. "I am the good shepherd. The good shepherd lays down his life for the sheep. The hired hand, who is not the shepherd and does not own the sheep, sees the wolf coming and leaves the sheep and runs away—and the wolf snatches them and scatters them. The hired hand runs away because a hired hand does not care for the sheep. I am the good shepherd. I know my own and my own know me, just as the Father knows me and I know the Father. And I lay down my life for the sheep. I have other sheep that do not belong to this fold. I must bring them also, and they will listen to my voice. So there will be one flock, one shepherd. For this reason the Father loves me, because I lay down my life in order to take it up again. No one takes it from me, but I lay it down of my own accord. I have power to lay it down, and I have power to take it up again. I have received this command from my Father."

This is the word of the Lord. **Thanks be to God!**

Sermon "Sheepish" Dr. Hull

*The Affirmation of Faith (*unison*) Heidelberg Catechism
Rev. Odom

One: What is your only comfort, in life and in death?

All: My only comfort, in life and in death, is that I belong – body and soul, in life and in death – not to myself, but to my faithful Savior, Jesus Christ, who at the cost of his own blood has fully paid for my sins and has completely freed me from the dominion of the devil; that he protects me so well that without the will of my Father in heaven not a hair can fall from my head; indeed, that everything must fit his purpose for my salvation. Therefore, by his Holy Spirit, he also assures me of eternal life and makes me wholeheartedly willing and ready from now on to live for him.

Prayers of the People and the Lord's Prayer Rev. Odom
. . . (*unison*) **Our Father, who art in heaven, hallowed be thy name, thy kingdom come, thy will be done, on earth as it is in heaven. Give us this day our daily bread, and forgive us our debts, as we forgive our debtors, and lead us not into temptation, but deliver us from evil. For thine is the kingdom, and the power, and the glory, forever. Amen.**

Offering Invitation Rev. Odom

Offertory *For the Life that You Have Given* arr. Vicki Collingsworth
As an alternative to the traditional offering plate, you may support the ministry of SMPC by giving online at www.smpchome.org/give or texting SMPC to 73256.

*Doxology No. 606
Praise God, from whom all blessings flow; praise him,

*all creatures here below; praise him above ye heavenly host;
praise Father, Son, and Holy Ghost. Amen.*

***Prayer of Dedication**

Harper Price

You gather us in, call us by name, and lead us into life abundant. From your goodness, we have received all that we are and all that we have. Use our time, talents, and treasures that we offer for the tending of your flock and for the creation of abundant life for all your children. Lead us, guide us, and send us out as your own. Amen.

We Go Out to Serve

***Hymn 187**

Savior, Like a Shepherd Lead Us

BRADBURY



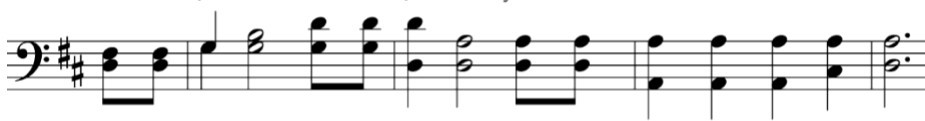
1 Sav - ior, like a shep-herd lead us; much we need your ten-der care.
2 We are yours: in love be - friend us; be the guard-ian of our way.
3 You have prom-ised to re - ceive us, poor and sin-ful though we be;
4 Ear - ly let us seek your fa - vor; ear - ly let us do your will.



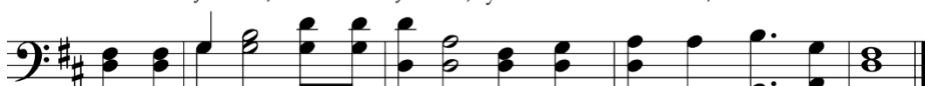
In your pleas-ant pas-tures feed us; for our use your fold pre-prepare.
Keep your flock: from sin de - fend us; seek us when we go a-stray.
you have mer - cy to re - lieve us, grace to cleanse, and power to free.
Bless - ed Lord and on - ly Sav - ior, with your love our spir - its fill.



Bless-ed Je - sus, bless-ed Je - sus, you have bought us: we are yours.
Bless-ed Je - sus, bless-ed Je - sus, hear your chil - dren when we pray.
Bless-ed Je - sus, bless-ed Je - sus, ear - ly let us turn to you.
Bless-ed Je - sus, bless-ed Je - sus, you have loved us; love us still.



Bless-ed Je - sus, bless-ed Je - sus, you have bought us: we are yours.
Bless-ed Je - sus, bless-ed Je - sus, hear your chil - dren when we pray.
Bless-ed Je - sus, bless-ed Je - sus, ear - ly let us turn to you.
Bless-ed Je - sus, bless-ed Je - sus, you have loved us; love us still.



***Charge and Benediction** Dr. Hull

***Congregational Response** No. 748

*Go with us, Lord, and guide the way
through this and every coming day,
that in your Spirit strong and true
our lives may be our gift to you.*

Postlude *Praise to the Lord, the Almighty* Hal H. Hopson

Worship Service Notes

Leading Worship this Morning

Dr. Sandy Hull, Transitional Pastor
Rev. Lindsey Odom, Associate Pastor of Youth & Missions/Outreach
Rebecca Guzman, Director of Spiritual Formation
Chancel Choir
Sarah Abushakra, organ and piano
Ella Howey, Harper Price, liturgists

Acolytes: Blair Choren

A/V Team: Brad Alford, Dylan Booker

Ushers: Dan DeChant, Gena DeChant, Bjorn Hansen, Curt Ireland, Tom Schorr, Jim Williams

Welcome Team: Jimmy Galati, Kathy Galati

Part 1 of the constitution of the Presbyterian Church (USA) is the Book of Confessions, which contains twelve faith statements from throughout the centuries and across the world. The Heidelberg Catechism was developed in the sixteenth century to encourage peace between Lutheran and Reformed Christians.

After worship, we hope you'll join us for lemonade and cookies near Coffee Grounds. Registry pads are located in your pews. Please sign and pass to your neighbor and perhaps introduce yourself to someone new!

Welcome to South Mecklenburg Presbyterian Church! If you are joining us in person or online, are a first-time visitor, a long-term member, or anything in between, we are glad that you are worshiping with us and we want to stay connected with you. To receive our emails, sent on Thursday mornings, contact Adrienne Jaquith, Office and Database Manager, adrienne@smpchome.org. SMPC uses Realm as a church directory and for event registrations. If you are new to Realm or have questions about it, please contact Adrienne Jaquith, and she will be happy to help!

Interested in joining South Mecklenburg Presbyterian Church? To learn more about membership and the process of joining, contact Rev. Melissa White, Parish Associate, melissa@smpchome.org or 704-887-7488.

Congregational Notes (as of May 6, 2026)

Remember in Prayer

- Cathy Janney as she recovers from surgery.
- Pat Hopkins as he recovers from surgery.
- Zach Bowyer, Director of Music and Organist, as he enjoys time for rest, reflection and spiritual renewal while on sabbatical.
- All those affected by conflict, displacement, and unrest around the world and at home.
- Our mission partners in Bayonnais, Haiti, that God's abundant love, grace, and mercy would bring peace and protection, provide daily bread, and grant safety, justice, and hope amidst ongoing crisis in their country.
- That God would guide us to serve others with compassion, justice, and mercy within our church, our community, and our world.
 - To join the prayer chain or send a prayer request:
prayer@SMPChome.org

Church Office Hours:

Monday – Thursday: 9:00 a.m. – 4:00 p.m.

Friday: Closed

We photograph and record worship services and events for church use. We may use these materials in church communications. Permission to podcast/stream the music in this service obtained from ONE LICENSE, License #A-735003. All rights reserved.



South Mecklenburg Presbyterian Church

8601 Bryant Farms Road, Charlotte, NC 28277, 704-544-0404
PO Box 79321, Charlotte, NC 28271
smpchome.org

Facebook: @southmecklenburgpresbyterian; Instagram: @southmeckpres

WELCOME!

WE'RE ALL EARS (AND WHISKERS)! CONGREGATIONAL ASSESSMENT TOOL (CAT) SURVEY OPENS TODAY!

This survey is an opportunity to share your experiences and priorities for our congregation. If SMPC has your email, you should receive an email from the church with a link to the survey around 11:30 a.m. today. We estimate that it will take about 20 minutes to complete, and it must be completed in one sitting. Computers and paper copies are available in the church office or Connection Center. You can also scan the QR code to complete the survey on your phone. If you love SMPC and are 13 years or older, we want you to participate!



Children: We also want to hear from you! *CAT for Kids* is a survey specifically "tailored" for children. There is one for ages 9 and under and one for ages 10-12. The surveys can be found starting today during Children's Worship at the Connection Center. Please return your completed *CAT for Kids* to the basket at the Connection Center today through Sunday, May 31.

THIS WEEK'S CLASSES & EVENTS

monday **Writing Your Legacy** McQueen Room

MAY 11
Final session for this group. Led by SMPC member Melinda Ferguson. Participants receive guidance in writing about family memories and history. Register via QR code. Contact: Melissa White, melissa@smpchome.org.



tuesday **Handiworkers Group** Palmer Building, Room 104

MAY 12
All levels of knitters, needlepointers, quilters, cross-stitchers and crocheters are invited. This group meets weekly to work on projects. Contact: Judy Jameson, jgjameson@gmail.com.

tuesday **SMPC Tuesday Mahjong** Narthex

MAY 12
All levels of mahjong players are invited to join this group that meets weekly on Tuesdays. Contact Mary Katheryne Zagora, mkzagora@smpchome.org, to be added to the email list.

tuesday **A Caregiver's Journey** McQueen Room

MAY 12
Finding meaning and purpose as you care for a loved one with Alzheimer's or dementia. Contact: Kathy Garner, kathygarner15@gmail.com.

tuesday **Men's Evening Study Group** Chapel 206

MAY 12
The group meets on the second and fourth Tuesdays of every month. New faces are always welcome! Contact: Jon Myers, jonmyers2@gmail.com.

wednesday **Pastor's Wednesday Morning Bible Study** McQueen Room or Zoom

MAY 13
Transitional Pastor Sandy Hull leads this study that meets weekly. The group is studying the last twelve books of the Old Testament. May 13 is on Jonah. All are welcome! If you would like to join by Zoom, please contact Adrienne Jaquith, adrienne@smpchome.org.

thursday **Shelter Ministry, Thursday** Mecklenburg Hall

MAY 14
This group meets on the second Thursday of every month to fill empty medicine bottles with body wash for Roof Above. Contact: Carol Morgan, morganc43@gmail.com.

9:30 a.m.

thursday
MAY 14
9:30 a.m.

Men's Breakfast Group
Big View Diner, 6637 Lancaster Hwy

This group meets on the second and fourth Thursdays each month to enjoy breakfast and conversation. Contact: Bob Tyler, Btyler@unitedskates.com.

thursday
MAY 14
1:15 p.m. -
3:15 p.m.

SMPC Thursday Mahjong
Narthex

All levels of mahjong players are invited to join this group that meets weekly on Thursdays. Contact Mary Kathyryne Zagora, mkzagora@smpchome.org, to be added to the email list.

friday
MAY 15
7:30 a.m. -
8:30 a.m.

Friday Morning Men's Group
Chapel 206

This group meets on the first and third Fridays of every month for study and fellowship. All are welcome. Contact: Curt Ireland, irelandcurtis00@gmail.com.

saturday
MAY 16
5:15 a.m.

Center of Hope Breakfast
Meet at SMPC at 5:15 a.m.

On the third Saturday of each month, SMPC preps, cooks and serves breakfast for guests at the Center of Hope. Volunteers are back at SMPC by about 9:00 a.m. Scan QR code to serve or donate. Contact: Lee Martin, leewilsonmartin@gmail.com.



sunday
MAY 17
9:00 a.m. -
9:50 a.m.

Ballantyne Families Helping Neighbors In Need
Pantry Tour & Service Project
Community House Middle School, All Ages

A tour of the facility and a hands-on service project using donated food items. Register and more info on Realm or QR code. Contact: Lindsey Odom, lindsey@smpchome.org.



sunday
MAY 17
11:30 a.m. -
1:00 p.m.

Lunch on the Grounds
Mecklenburg Hall and Church Grounds

Everyone is welcome! Join us after worship for a delicious lunch, catered by Brown Bag. We've also extended the invitation to our friends at Mosaic of Charlotte! More information and register via QR code or Realm. Contact: Melissa White, melissa@smpchome.org.



sunday
MAY 17
5:00 p.m. -
6:30 p.m.

BAM! Bible and Music - End of Year Party!
Sanctuary, Ages Kindergarten-5th Grade

Dinner, water games, and lots of fun as we wrap up the season. We'll end the night with a waterslide from 6:30-7:00 p.m.! Parents are invited to join us during that time if their child would like to participate. We will also sing in worship on Sunday, May 17 - watch your email for details. Register on Realm. Contact: Rebecca Guzman, rebecca@smpchome.org.

sunday
MAY 17
5:00 p.m. -
6:30 p.m.

SMPC Youth Summer Kickoff Event
Mecklenburg Hall, Middle and High Schoolers

It will include an inflatable waterslide, cornhole, spikeball, and food & fellowship! Pizza will be served! Register on Realm. Contact: Lindsey Odom, lindsey@smpchome.org.

UPCOMING EVENTS

International Dining Group, Thursday, May 21, 6:00 p.m.,
Aroma Indian Grill, 9648 Red Stone Drive, Indian Land, SC -

Everyone is invited to join this group as they sample cuisines around town each month. Space is limited to 24. RSVP via QR code or Realm. Contact: Carol Roan, candwroan@gmail.com, or Brenda Villa, bvilla20@carolina.rr.com.



Nourish Up Warehouse Service - Saturday, May 30, 11:00 a.m.-1:00 p.m., Nourish Up Warehouse, 901 Carrier Drive, Ages 13 years and older - Volunteers will support food distribution efforts. Register via the QR code, then follow the instructions there to register with the Nourish Up. Space is limited. Contact: Lindsey Odom, lindsey@smpchome.org.

Yes, I want to help shape SMPC's future!

I will complete the CAT survey by Sunday, May 31, 2026.

Name: _____

Email: _____

____ Check if you will need assistance with the survey and would like someone to contact you.

Phone: _____

Please complete and place in the offering plate.

